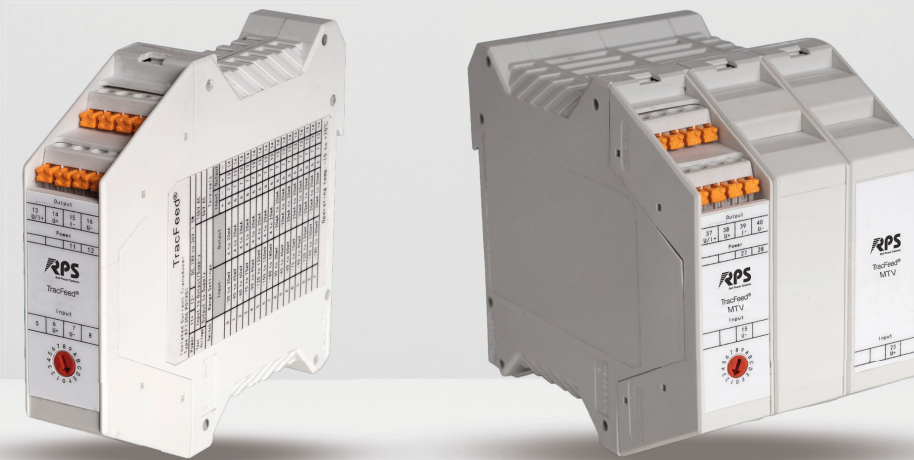


TracFeed[®] MTx-series

Isolating Transducer

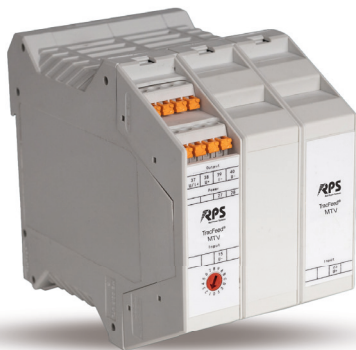


TracFeed® MTx-series

Isolating transducer

The development of isolating transducers

The MTx-series were developed based on the requirements of the various areas of application, primarily those of the railway sector. Based upon the TracFeed® MTx-series, Rail Power Systems offers both the TracFeed® MTC and TracFeed® MTV, as a multifunctional and reliable basis for current and voltage isolating transducers.



TracFeed® MTV
voltage isolating transducer

Special features

- High electric strength
- Wide temperature range
- Wide application range
- Port with push-in spring connection
- Easy top-hat rail assembly
- Robustness (thanks to internal potting)
- Durability

The isolating transducers are designed in accordance with EN50123-1 / EN50123-7-2 (measuring transducer for current measurement) / EN50123-7-3 (measuring transducer for voltage measurement) and tested in accordance with EMC railway standard EN 50121- 1/ -4 / -5. The output signals are potential free from each other as standard signals according to DIN IEC 60381-1 / -2.



TracFeed® MTC
current isolating transducer

„Useful Separation“ in practice

Isolating transducers in DC applications are used for electrical isolation between the primary circuit and the secondary circuit. Normal measurement signals are provided for the protection devices of the TracFeed® DCP family, programmable logic controllers (PLCs), process control systems and control technology as well as analogue indications. Specific areas of application for voltage and/or current measurements include:

- DC switchgears, e.g. TracFeed® TDx
- Voltage limiting devices, e.g. TracFeed® VLD
- Rectifiers, e.g. TracFeed® TRx
- Retrofit measures

Model overview

TracFeed® MTx-Serie isolating transducer

	MTC-U	MTV
Application	Current measurement Shunt mV voltage	Voltage measurement
Input voltage	± 30 mV - ± 180 mV	0V - ± 1000/2000V
Output	± 20 mA, 4 -20 mA	± 20 mA, 4 -20 mA 0 - 10 V



RPS/EN/503/0824

© 2024. All rights reserved by Rail Power Systems GmbH.

The specifications set out in this document apply to conventional applications. They do not represent performance limits.

This means that divergent specifications may be attained in specific applications. The contractually agreed specifications alone shall apply. We reserve the right to effect technical modifications.

TracFeed® is a registered trademark of Rail Power Systems GmbH.

Rail Power Systems GmbH

Garmischer Straße 35 | 81373 Munich | Germany | T +49 89 41999-0 | F +49 89 41999-270 | www.rail-ps.com