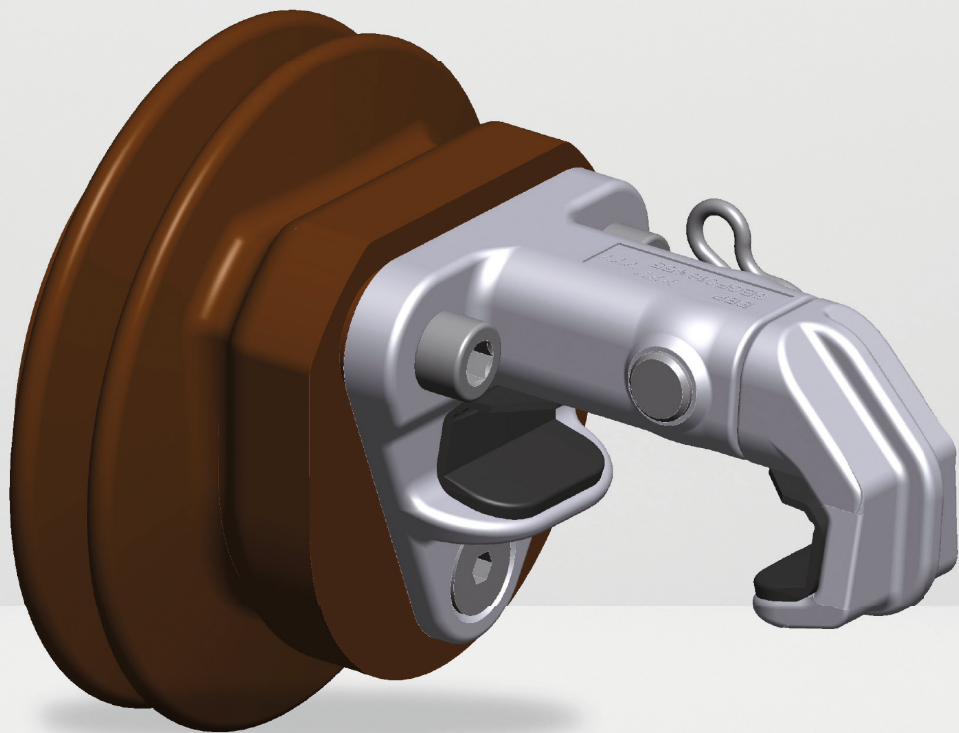


TracFeed[®] STS

Conductor Rail Clamp



TracFeed[®] STS

Conductor Rail Clamp

The function of conductor rail supports is to keep the conductor rail at a defined distance from the track. The Conductor rail clamp guides the conductor rail in a longitudinal direction. The newly designed Conductor rail clamp by Rail Power Systems is perfectly adaptable to the given operating conditions, such as environmental stress, and demonstrates high durability, operating reliability and serviceability.

Features:

- Usage in conjunction with an aluminium conductor rail
- Lightweight design by using aluminium
- Extra strong, wear-resistant surface by Hart-coat[®]
- Double insulation
- Sliding Inserts made of POM*
- Compatible with all other Rail Power Systems conductor rail clamps

Service:

- Maintenance free
- Only visual inspection required
- No tools required for replacement of sliding inserts, claw and conductor rail

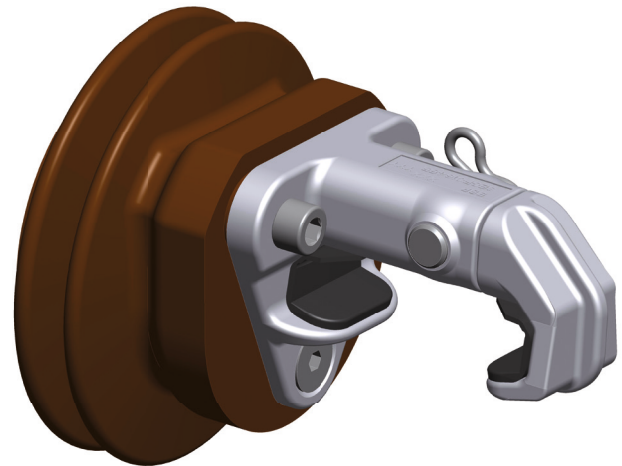
Assembly:

- The claw base is mounted to the isolator with screws.
- The claw is inserted into the claw base.
- The claw is fixed in the claw base with a bolt and secured using a split pin.

Technical Data:

• Nominal strength (90° to conductor rail)	12,5 kN
• Conductor rail clamp material	Aluminium
• Sliding insert material	POM*
• Insulator material	Cast Resin
• Weight	ca. 1,85 kg

* Polyoxymethylen



RPS/EN/405/0824

© 2024. All rights reserved by Rail Power Systems GmbH.

The specifications set out in this document apply to conventional applications. They do not represent performance limits.

This means that divergent specifications may be attained in specific applications. The contractually agreed specifications alone shall apply. We reserve the right to effect technical modifications.

TracFeed[®] is a registered trademark of Rail Power Systems GmbH.

Rail Power Systems GmbH

Garmischer Straße 35 | 81373 Munich | Germany | T +49 89 41999-0 | F +49 89 41999-270 | www.rail-ps.com