

# TracFeed<sup>®</sup> SFA

Remote motor drives



# TracFeed® SFA

## Remote motor drives

Rail Power Systems has been developing and producing TracFeed® contact line products in close collaboration with customers and partners for decades. TracFeed® products are approved for use in numerous countries by system operators in local and intercity transport and have proved themselves over many years of use under wide-ranging conditions.

### Die TracFeed®SFA remote motor drives

make it possible to activate the switch disconnectors and earthing switches installed on the pole tips for intercity and local transport contact lines. The TracFeed® SFA remote motor drives developed by Rail Power Systems offer a large number of customisation options thanks to the extensive range of additional equipment.

Due to the solid construction method and the materials used, the TracFeed® SFA remote motor drives from Rail Power Systems have a very long life expectancy and low maintenance requirements.

Remote motor drives for rated voltage AC 230 V can be operated with a maximum line impedance of 42 Ω.

The following minimum cable cross sections arise depending on the line length:

Line length	Cable cross section
1,8 km	1,5 mm <sup>2</sup> (23,4 Ω/km)
3,0 km	2,5 mm <sup>2</sup> (14,0 Ω/km)
4,8 km	4,0 mm <sup>2</sup> (8,76 Ω/km)

### Special features:

- Switching cycles: at least 50 000
- Wear parts can be replaced locally in just a few minutes
- Minimal power required
- Low noise emission



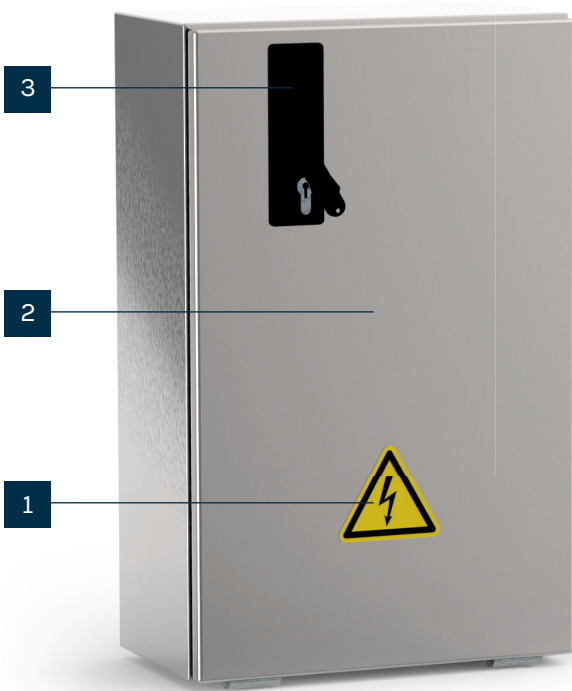
### Technical Data TracFeed® SFA

Operating current	AC or DC
Rated current	2,5 A
Drive system	450 Nm
Protection system	IP54
Dimensions (H x B x T)	600 x 380 x 210 mm
Weight	31 kg
Enclosure material	Stainless steel
Stroke	100 or 200 mm
Switching delay	2 to 4 Seconds
Switching cycles	> 50000

properties exemplary for type 1.13-1

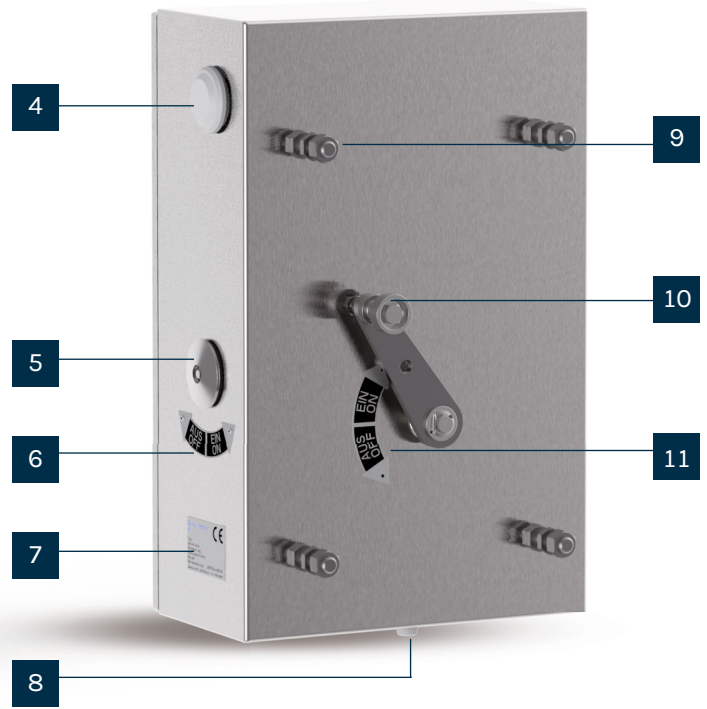
# Standard components

remote motor drives from Rail Power Systems consist of the following basic components



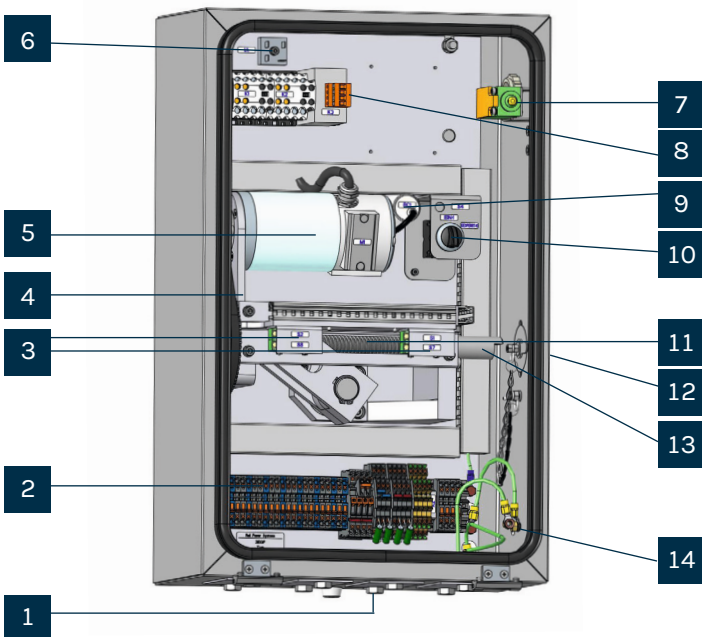
- 1. Warning sign
- 2. Enclosure door
- 3. Lock

- 4. Pressure equalisation nozzle
- 5. Crank cover



- 6. "On/Off" label
- 7. Rating plate
- 8. Cable entry

- 9. Fastening bolt
- 10. Adjusting lever
- 11. "On/Off" label



- 1. Cable entry
- 2. Terminal strip X1
- 3. Limit switch on the gear unit
- 4. Tooth belt
- 5. Direct current motor
- 6. Rectifier
- 7. Door contact

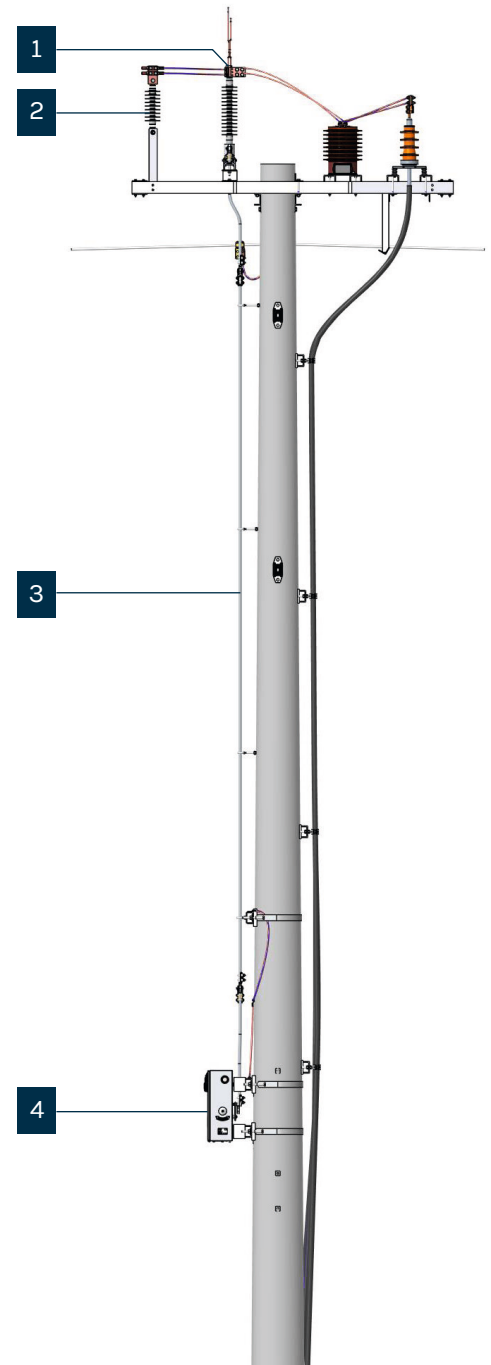
- 8. Overcurrent relay K3
- 9. Capacitor
- 10. Mode selection switch
- 11. Gear spindle
- 12. Crank cover
- 13. Crank cam
- 14. PE connection

# SFA Model versions

The TracFeed® SFA remote motor drives are installed on the contact line pole and are connected to the switch disconnector via a final controlling element.

The switches are actuated via a shift linkage in conventional cases. The shift linkage establishes a mechanical connection to the switch adjusting lever starting from the remote motor drive installed on the pole.

	3EGF020333	3EGF021401	3EGF021394	3EGF021515	3EGF021676
Typ	1.13 - 1	1.22 - 1	1.23	1.24	1.25
Potential-free signal contacts	•	•	•	•	•
Crank handle		•	•		•
Currentless crank opening					•
Swivel lever lock	•	•	•	•	•
TDoor opener contact	•	•	•	•	•
Mode selection switch	•	•	•	•	
Circuit breaker for voltage transformer		•		•	
Local control					•
Continuous current					•
Reference insert	Germany: DB AG	Portugal	Netherlands	Germany: DB AG	Mass transit Linz, Malaysia



- 1. MTS
- 2. Post insulator
- 3. Shift linkage
- 4. Remote motor drive

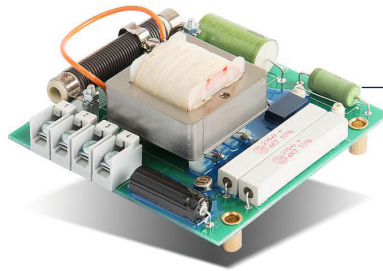


# Accessories

Rail Power Systems also supplies custom-fit and high-quality accessories.

Bestellnummer	Product
3EGF002076	Crank-handle
3EGF012000	Rectangular key
3EGF021806	Triangular key*
3EGF009199	Bit key

\*Only for NL



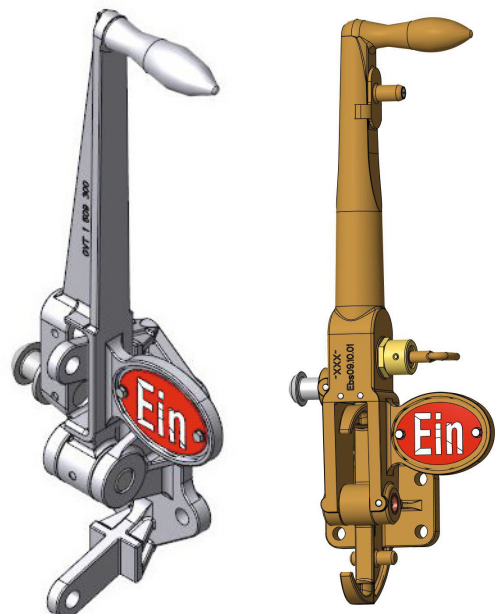
Short-circuit signalling relay  
(optional installation location)



## Manual drive

Order number	Material	Stroke (mm)	Key
3EGF006515	Alu	100	Padlock
3EGF006516	Alu	200	Padlock
3EGF001982	Bronze	200	Triangular key
3EGF001990	Bronze	200	Rectangular key
3EGF006631	Bronze	100	Rectangular key
3EGF016664	Alu	200	Castell-Interlocking

The manual drives are available with signs in various languages



# Assembly

**With Precision: always on the move - we've got the right contact wire to keep our customers moving.**

**Rail Power Systems has been developing and producing TracFeed® contact line products in close collaboration with customers and partners for decades.**

TracFeed® products are approved for use in numerous countries by system operators in intercity and local transport and have proved themselves over many years of use under wide-ranging conditions. You are also assured of some impressive advantages with our entire product portfolio.

The contact line components are suitable for standard solutions and for tailored, completely customer-specific operating concepts for local and intercity transport.

Whether you are purchasing clamps for ropes and wires, aluminium components for cantilevers, tensioning wheel assemblies or section insulators from Rail Power Systems: all our contact line elements offer you different advantages.

## Your advantages:

- Long service life
- High reliability
- Low life-cycle costs
- Excellent quality
- Can be used under various climatic and operating conditions

Get in touch with us if you have complex technical questions about our products. We will also be happy to provide you with in-depth information and, on request, present our complete product range featuring all product lines for TracFeed® contact line components, such as TracFeed® ALU 1000, 2000, 3000, TracFeed® OSS overhead conductor rails and TracFeed® STS conductor rail systems.

## Measurable increase in performance

**DNV**

### MANAGEMENT SYSTEM ZERTIFIKAT

Zertifikat-Nr.: 1000468655-MSC-RVA-DEU  
Datum der Erstzertifizierung: 09. Januar 2024  
Gültig: 17. Dezember 2021 – 31. Oktober 2024  
Ablaufdatum des letzten Zertifizierungszyklus: 31. Oktober 2021  
Datum der letzten Rezertifizierung: 16. Oktober 2021

Hiermit wird bescheinigt, dass das Unternehmen  
**Rail Power Systems GmbH**  
Garmischer Straße 35, 81373 München, Deutschland  
sowie die im Anhang aufgeführten Standorte

ein Umwelt-Managementsystem in Übereinstimmung mit dem folgenden Standard eingeführt hat und anwendet:  
**ISO Muster:2015**

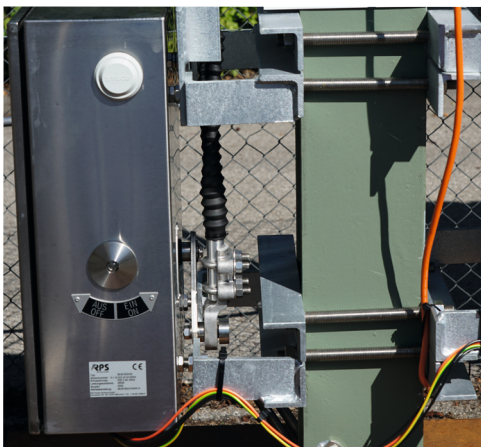
Dieses Zertifikat ist gültig für die folgenden Produkt- oder Dienstleistungsbereiche:  
**Vertrieb, Beratung, Fertigung von Komponenten, Entwicklung, Planung und Montage von Fahrleitungs- und Bahnenergieversorgungssystemen / Netzleittechnik / 50-Hz Anlagen / Signaltechnik inklusive Wartung und Service (Instandhaltung) und Gesamtprojekte**

Ort und Datum:  
Barendrecht, 17. Dezember 2021

Zertifizierungsgesellschaft:  
DNV - Business Assurance  
Zwolloweg 1, 2994 LB Barendrecht,  
Niederlande

Eric Koek  
Vertreter des Managements

Bei Verstoß gegen die im Zertifizierungsvertrag genannten Bedingungen kann das Zertifikat seine Gültigkeit verlieren.  
AKKREDITIERTE STELLE: DNV Business Assurance B.V., Zwolloweg 1, 2994 LB, Barendrecht, Netherlands - TEL: +31(0)102922899, www.dnv.com/businessassurance



Quality: ISO 9001  
Environment: ISO 14001  
Energy: ISO 50001  
Health: ISO 45001



RPS/EN/409/0824

© 2024. All rights reserved by Rail Power Systems GmbH.

The specifications set out in this document apply to conventional applications. They do not represent performance limits.

This means that divergent specifications may be attained in specific applications. The contractually agreed specifications alone shall apply. We reserve the right to effect technical modifications.

TracFeed® is a registered trademark of Rail Power Systems GmbH.

**Rail Power Systems GmbH**

Garmischer Straße 35 | 81373 Munich | Germany | T +49 89 41999-0 | F +49 89 41999-270 | [www.rail-ps.com](http://www.rail-ps.com)