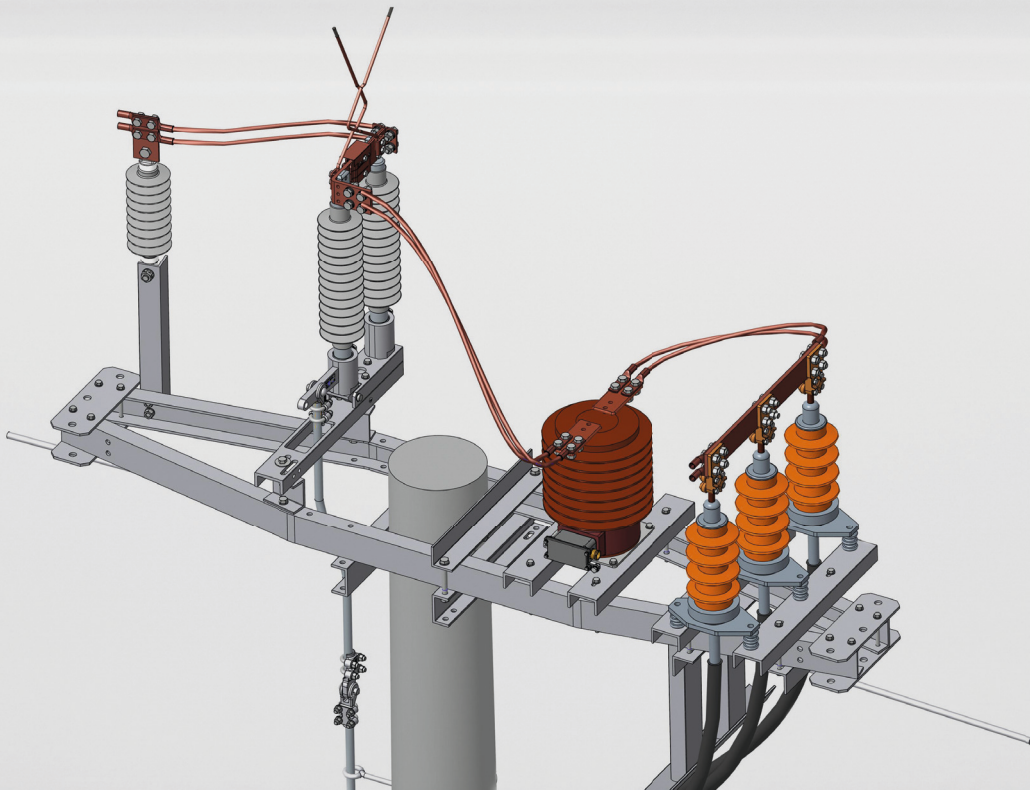


TracFeed[®] MTS

Mast Disconnecter 15KV to 25KV AC



TracFeed® MTS

Mast Disconnecter

Rail Power Systems has been developing and producing TracFeed® contact line products in close collaboration with customers and partners for decades. TracFeed® products are approved for use in numerous countries by system operators in local and intercity transport and have proved themselves over many years of use under wide-ranging conditions.

Development of the mast disconnecters

The mast disconnector family has been revised and optimised due to new requirements and customer-specific specifications. Rail Power Systems GmbH has set itself the task of satisfying customer requirements for a low-maintenance, easy-care product group. Here, the focus is on innovative and rule-compliant technical implementation.

Special features of the earthing switches

The distinguishing feature of RPS earthing switches is that, in contrast to similar products, the sensor signal for successful earthing is queried directly in the contact. RPS earthing switches are thereby able to offer enhanced safety for a successfully performed earthing operation.

Assembly

The assembly of TracFeed® MTS mast disconnectors is carried out on traverses that are mounted on the head of the contact line pole. The pole itself usually protrudes above the height of the catenary.

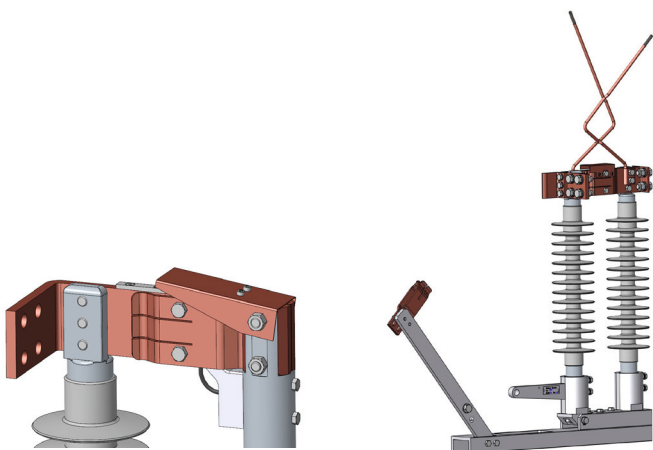
With conventional designs, the switches can be operated via a shift linkage. Here, a remote motor drive (SFA) provides the required 200 mm stroke for actuation.

Modules

- Uniform basic design
- Individual adaption of basic profile – depending on the installation situation
- Use of other insulators, e.g. 3 kV deviating from standard variant 15/25 kV
- Retrofitting of the earth contact for the mast disconnector

Special features

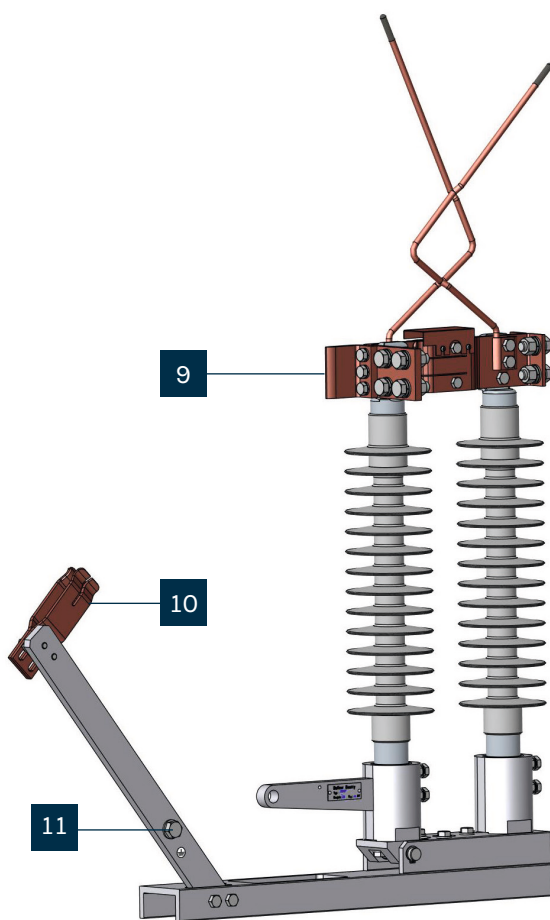
- Durability for a long service life: Designed and tested for at least 50 000 switching cycles
- Dirt- and water-repellent insulator
- Implementation in accordance with the provisions of the Birds Directive: reduced danger of short circuits caused by birds
- Insulator with increased creepage distance
- Backward compatibility for use in existing systems



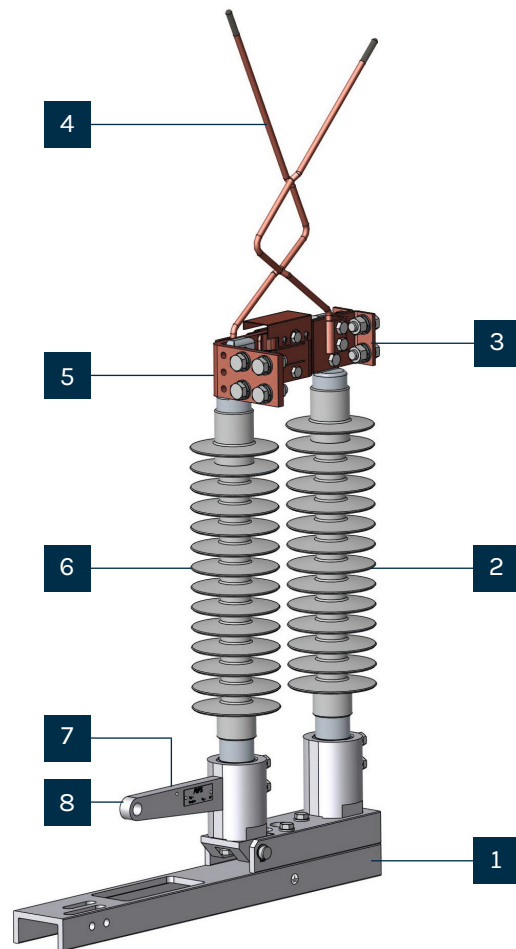
15/25-kV-mast disconnector with earth contact

Standard Components

TracFeed® MTS mast disconnecter line contact with composite insulators and main contacts



Modell with earth contact



Modell without earth contact

Gesamtansicht

1. Base plate
2. Fixed switch area with composite insulator
3. Mating contact (with contact fuse)
4. Arcing horns
5. Contact blade
6. Movable switch area with composite insulator

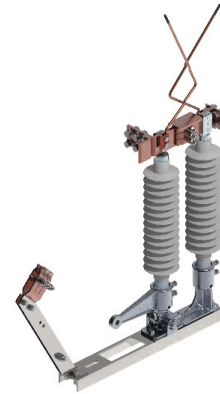
7. Plate
8. Swivel base
9. Contact blade with earthing contact
10. Earth contact
11. Connection point for the earthing cable

Quality and optimisation of the manufacturing process

The switches listed are designed as per the DIN EN 50152-2 standard.

Switch disconnecter with earth contact

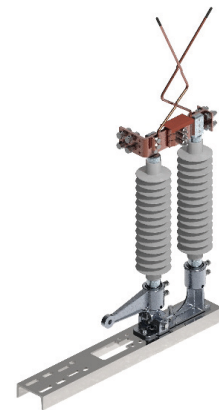
Order number	3EGF021805	3EGF021814	3EGF020664
Rated voltage (kV AC)	25	25	25
Insulators	Composite	Composite	Composite
Rated operating current (kA)	1.7	1.7	1.7
Creepage distance (mm)	1590	1590	1590
Rated short-time withstand current (kA)	40	40	40
Short-circuit current duration (s)	1	1	1
Mass (kg)	47	37	31.6



3EGF021814

Switch disconnecter without earth contact

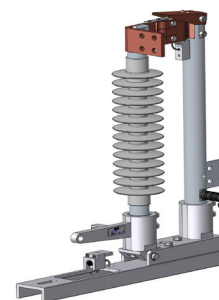
Order number	3EGF021803	3EGF021813	3EGF021021
Rated voltage (kV AC)	25	25	25
Insulators	Composite	Composite	Composite
Rated operating current (kA)	1.7	1.7	1.6
Creepage distance (mm)	1590	915	1590
Rated short-time withstand current (kA)	40	50	40
Short-circuit current duration (s)	1	1	1
Mass (kg)	38	29.5	316



3EGF021803

Earthing switch up to 25 kV with running-in supervision

Order number	3EGF021884	3EGF021020
Rated voltage (kV AC)	25	25
Insulators	Composite	Composite
Rated operating current (kA)	1.7	1.6
Creepage distance (mm)	1590	1590
Rated short-time withstand current (kA)	40	40
Short-circuit current duration (s)	1	1
Mass (kg)	27	28.2



3EGF021020

Deployment in systems for automatic earthing of railway systems (e.g. AEA/OLSP)

Assembly and accessories

Rail Power Systems also supplies custom-fit and high-quality accessories. These can be integrated in the contact line installations together with the switch disconnectors. The following extensions are available:

Tube connection fitting for tube Ø 26 mm	3EGF020935
Clevis end fitting for tube Ø 26 mm	3EGF020739
Eye end fitting centric for tube Ø 26 mm	3EGF020937
Eye end fitting eccentric for tube Ø 26 mm	3EGF020936



Shift linkage (on request)



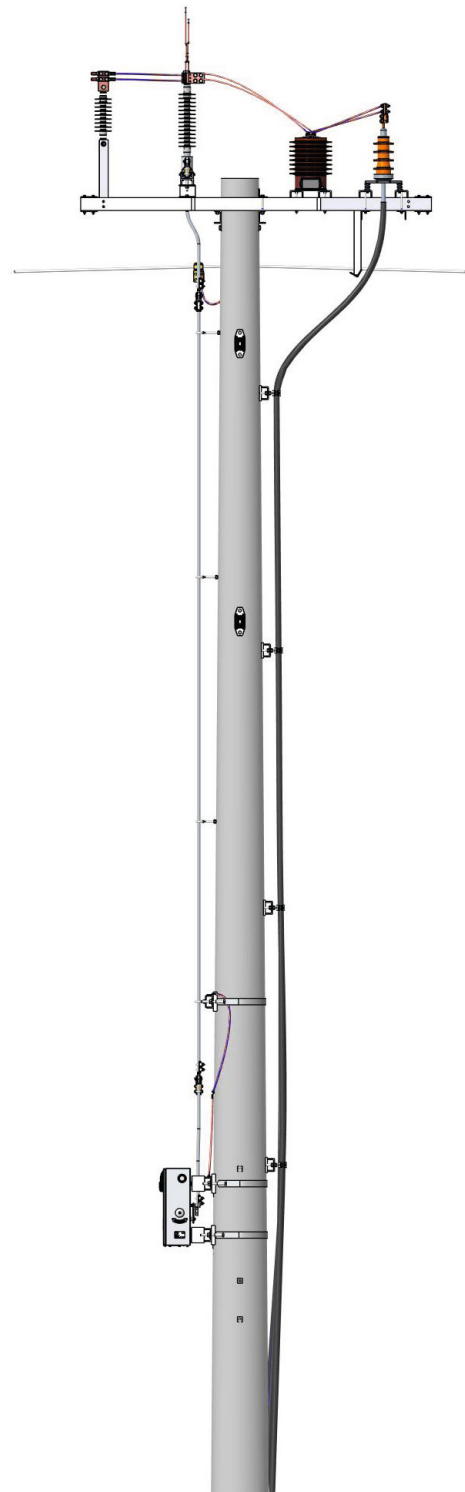
Push-pull cable (DZK)



Remote motor drive (SFA)



Manual drive (on request)



With Precision: Always on the move- We've got the right contact wire to keep our customers moving

Rail Power Systems has been developing and producing TracFeed® contact line products in close collaboration with customers and partners for decades.

TracFeed® products are approved for use in numerous countries by system operators in intercity and local transport and have proved themselves over many years of use under wide-ranging conditions. You are also assured of some impressive advantages with our entire product portfolio.

The contact line components are suitable for standard solutions and for tailored, completely customer-specific operating concepts for local and intercity transport.

Whether you are purchasing clamps for ropes and wires, aluminium components for cantilevers, tensioning wheel assemblies or section insulators from Rail Power Systems: all our contact line elements offer you different advantages.

Your advantages:

- Long service life
- High reliability
- Low life-cycle costs
- Excellent quality
- Can be used under various climatic and operating conditions

Get in touch with us if you have complex technical questions about our products. We will also be happy to provide you with in-depth information and, on request, present our complete product range featuring all product lines for TracFeed® contact line components, such as TracFeed® ALU 1000, 2000, 3000, TracFeed® OSS overhead conductor rails and TracFeed® STS conductor rail systems.

Measurable increase in performance



MANAGEMENT SYSTEM ZERTIFIKAT

Zertifikats-Nr.: 1000406855-MSC-RvA-DEU	Datum der Erteilungszertifizierung: 09. Januar 2024	Gültig: 17. Dezember 2021 – 31. Oktober 2024 Ablaufdatum des letzten Zertifizierungszyklus: 31. Oktober 2024 Datum der letzten Rezertifizierung: 16. Oktober 2021
--	--	--

Hiermit wird bescheinigt, dass das Unternehmen
Rail Power Systems GmbH
Garmischer Straße 35, 81373 München, Deutschland
sowie die im Anhang aufgeführten Standorte

ein Umwelt-Managementsystem in Übereinstimmung mit dem folgenden Standard eingeführt hat
und anwendet:
ISO Muster:2015

Dieses Zertifikat ist gültig für die folgenden Produkt- oder Dienstleistungsbereiche:
**Vertrieb, Beratung, Fertigung von Komponenten, Entwicklung, Planung und Montage von
Fahrliefern- und Bahnenergieversorgungsanlagen / Netzleittechnik / 50-Hz Anlagen
/ Signaltechnik inklusive Wartung und Service (Instandhaltung) und Gesamtprojekte**

Ort und Datum: Barendrecht, 17. Dezember 2021	Zertifizierungsstelle: DNV - Business Assurance Zwolsseweg 1, 2994 LB Barendrecht, Netherlands
--	---



Eric Koek
Vertreter des Managements



Bei Verstöß gegen die im Zertifizierungsvertrag genannten Bedingungen kann das Zertifikat seine Gültigkeit verlieren.
AKKREDITIERTE STELLE: DNV Business Assurance B.V., Zwolsseweg 1, 2994 LB, Barendrecht, Netherlands - TEL: +31(0)102922889, www.dnv.com/assurance

Quality: ISO 9001
Environment: ISO 14001
Energy: ISO 50001
Health: ISO 45001



RPS/EN/437/0824

© 2024. All rights reserved by Rail Power Systems GmbH.

The specifications set out in this document apply to conventional applications. They do not represent performance limits.

This means that divergent specifications may be attained in specific applications. The contractually agreed specifications alone shall apply. We reserve the right to effect technical modifications.

TracFeed® is a registered trademark of Rail Power Systems GmbH.

Rail Power Systems GmbH

Garmischer Straße 35 | 81373 Munich | Germany | T +49 89 41999-0 | F +49 89 41999-270 | www.rail-ps.com