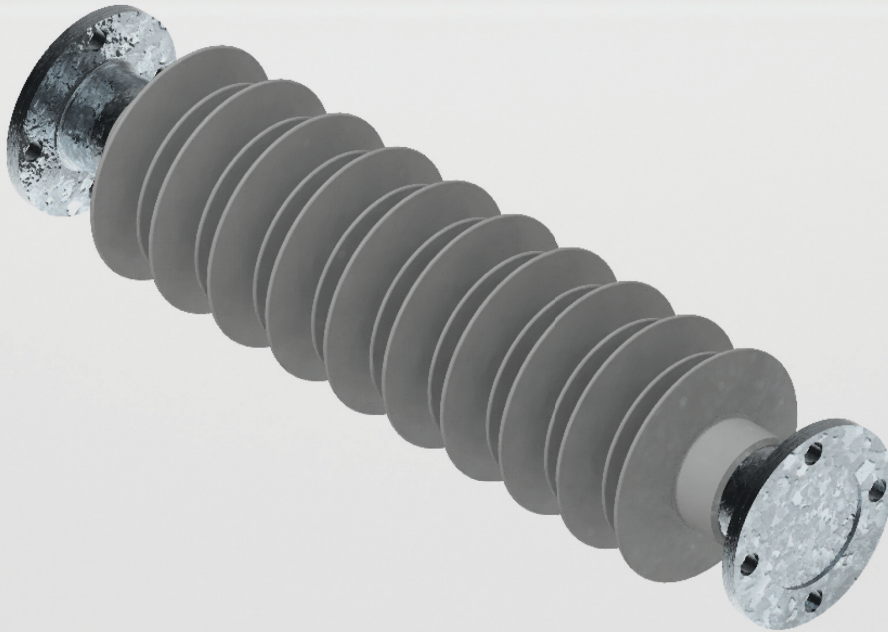


TracFeed[®] ISO

composite insulators



TracFeed® ISO

composite insulators

The Development of Insulators has progressed in recent years, with more and more composite insulators being used.

Rail Power Systems GmbH is on the way to satisfying the customer-specific demand for a low-maintenance, easy-care product in this product group.



The GRP rod of the RPS insulators is sheathed in high-quality grey silicone. The fittings are made of galvanised steel. All composite insulators are design- tested and type-tested in line with DIN EN 62621.

Special features of the silicone sheathing

- Durability for a long service life
- Dirt- and water-repellent
- Good electric strength
- Greater temperature range
- Good trace and electric arc resistance
- Highly stable
- Very strong resistance to ozone and ultraviolet light



“Useful Segregation” in practice

Insulators in contact line installations are used for electrical segregation (e.g. between live components and earthed components) and as key components of supporting and bearing structures.

Specific areas of application include: Support points for contact line and TracFeed® OSS overhead conductor rail.

- On fixed terminations
- Feed line and reinforcing feeder
- Switches

Model overview TracFeed® ISO composite insulators

| | to 3 kV | 15 kV | 25 kV |
|----------------------------|--------------------------|--------------------------|--------------------------|
| Cantilever (eye - tube) | 3EGF019711 | 3EGF018716 | 3EGF019573 |
| Cantilever (tube - tube) | - | 3EGF018715 | 3EGF020075 |
| Termination (alternative)* | 3EGF018723 3EGF018326 | 3EGF018877 3EGF018326 | 3EGF019853 3EGF018326 |
| OCR suspended support | 3EGF021023 | 3EGF019386 | 3EGF018631 |
| OCR cantilever support | 3EGF018630 | 3EGF018630 | 3EGF018630 |

* in the event of extended creepage distance requirement, e.g. to protect birds

RPS/EN/442/0724

© 2024. All rights reserved by Rail Power Systems GmbH.

The specifications set out in this document apply to conventional applications. They do not represent performance limits. This means that divergent specifications may be attained in specific applications. The contractually agreed specifications alone shall apply. We reserve the right to effect technical modifications.

TracFeed® is a registered trademark of Rail Power Systems GmbH

Rail Power Systems GmbH

Garmischer Straße 35 | 81373 Munich | Germany | T +49 89 41999-0 | F +49 89 41999-270 | www.rail-ps.com